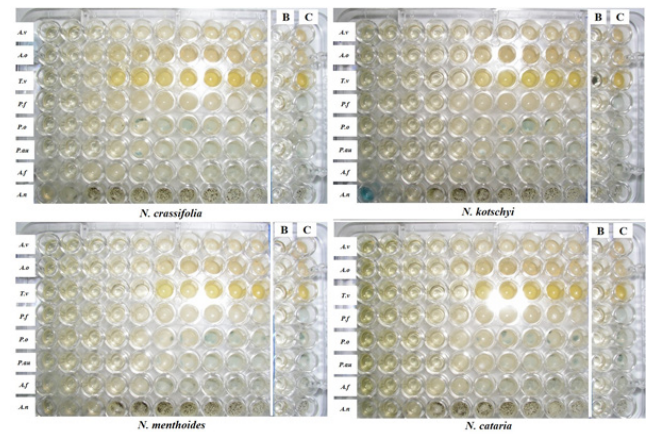


Supplementary Figure 1. Microdilution plates for antibacterial tests of methanol extracts of four *Nepeta* species. For bacterial strain abbreviations, please refer to Table 1. B = blank control without bacterial culture; C = control bacterial solution.



Supplementary Figure 2. Microdilution plates for antifungal tests of methanol extracts of four *Nepeta* species. For fungal species abbreviations, please refer to Table 2. B = blank control without fungal culture; C = control fungal solution.